



PLASLOC

LCClip

INSTALLATION GUIDE

TOOLS AND MATERIALS REQUIRED FOR **LoIn** INSTALLATION

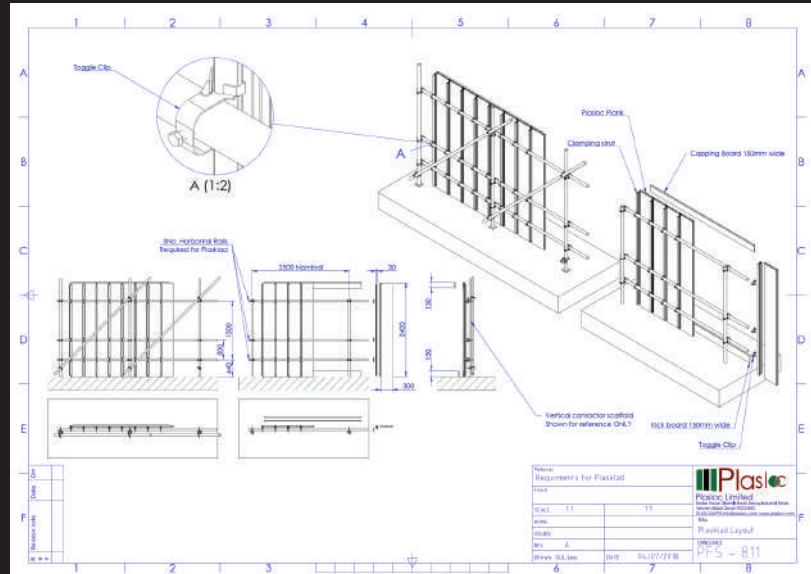
1. Saw
2. Mallet
3. Level
4. Tape Measure
5. Cordless Drill
6. 17mm Socket



To view all components for the LocClip installation please visit:

www.plas-shop.com/products/external

1. Opposite is the DWG identifying the heights of the ledgers required to secure the panels to.



2. Attach a spine to your scaffold using 3 clips with a 17mm spanner.

2.1. Place a board in line with the spine and tap it into place – making sure the male end is connecting to the female end.

2.2. Check level



2.3. Connect another spine to the other side of the board – making sure the female and male ends are connecting – clip to the scaffold.

2.4. Check level every 3rd board.



3. Attach your pre-cut notched door board to the end board.

3.1. Slide your pre-fabricated door onto the existing boards

3.1. Place your pre-cut overdoor boards above the door and use the mallet to connect the male and female sides (as you did the boards).

3.2. Continue with boards and spines accordingly.



**For Corners
(with corner
module):**

4. Place a corner module on the end of the board where you wish the corner to be taken.



4.1. Drill an adapted clamp strut on to a board – making sure it's in line with the ledger – attach to scaffold using a clip.

4.2 Repeat steps 2-2.4



For Corners (without corner module):

4. Place the male side of a board at 90 degrees onto the final board.

4.1. Attach a spine and use 3 clips to attach it the scaffold.

4.2. Level

4.3. On the corner, place the pre-cut capping and drill either side, from the top to the bottom.



Kickers and Capping:

6. Place the kickers along the bottom and the capping along the top of your hoarding.

6.1. Drill to hold in place – making sure you screw into the spines NOT the boards.



USEFUL CONTACTS

If you have any questions or concerns - please don't hesitate to call or drop us an email.

T: 01626 356995

E: admin@plasloc.com

W: WWW.PLASLOC.COM